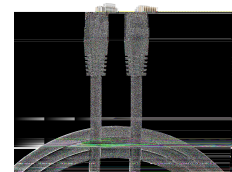
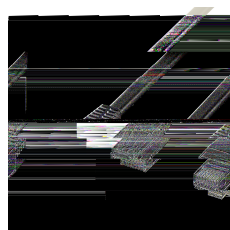
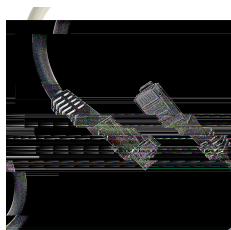
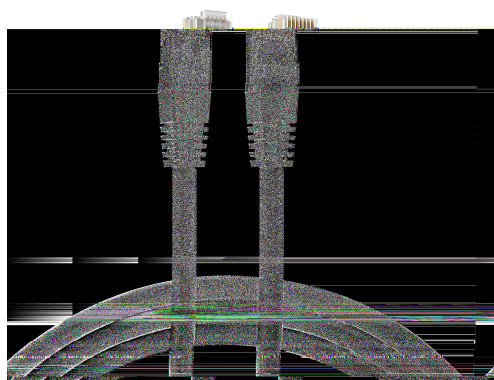


# DATASHEET

## RJ45 Patch Cord Cat.6 U/UTP PVC CCA grey 2m



### General data

The unshielded Cat.6 RJ45 patch cable ensures excellent performance for 5 Gigabit Ethernet applications. The moulded grommet captivates with its **slim design** and thus simplifies the insertion process in cramped conditions.

Cross section 4 x 2 x **AWG24/7**

Moulded grommet, slim design

**Length imprint on the boot**

### Allgemeine Daten

|  |                        |
|--|------------------------|
| Model                                  | Unshielded             |
| Suitable for degree of protection (IP) | IP20                   |
| Fire retardant version                 | False                  |
| Jacket Material                        | Polyvinylchlorid (PVC) |
| AWG-size                               | 24/7                   |
| Length imprint                         | True                   |

### General data

|                |       |
|----------------|-------|
| Locking lever  | False |
| Pin assignment | 1:1   |

This datasheet was created automatically on 08-05-2024 . Technical changes reserved.



# DATASHEET

## RJ45 Patch Cord Cat.6 U/UTP PVC CCA grey 2m

|                         |                                 |
|-------------------------|---------------------------------|
| Colour anti-kink sleeve | grey                            |
| Contacts                | Gold plated $\mu$ " gold plated |
| Allocation              | acc. TIA/EIA 568B               |
| Connector type          | RJ45 Standard                   |
| Cable type              | U/UTP                           |
| Area of Application     | Industrial Ethernet             |
| Colour outer sheath     | grey                            |
| Anti-kink sleeve        | plugged in                      |
| Halogen free            | False                           |
| Category                | 6                               |

### Mechanical characteristics

|                |       |
|----------------|-------|
| Bending radius | 30 mm |
| Mating cycles  | 750   |

### Cable construction

|                    |     |
|--------------------|-----|
| Conductor Material | CCA |
|--------------------|-----|

### Kabelaufbau

|                                |           |
|--------------------------------|-----------|
| Type of connector connection 2 | RJ45 8(8) |
| Type of connector connection 1 | RJ45 8(8) |
| Cable construction             | 4x2       |

### Cable sheath

|   |       |
|---|-------|
| Oil resistant (according to EN 60811-404) | False |
| Silicone-free                             | True  |

### Kabelmantel

|                             |  |
|-----------------------------|--|
| Outer diameter of the cable | 5.9 mm   |
| Printing                    | Cat.6 UTP AWG24 stranded x 4pairs cable<br>www.efb-elektronik.de |

### Environmental conditions

|                   |           |
|-------------------|-----------|
| Temperature range | -20 70 °C |
|-------------------|-----------|

### Electrical characteristics

This datasheet was created automatically on 08-05-2024 . Technical changes reserved.



# DATASHEET

## RJ45 Patch Cord Cat.6 U/UTP PVC CCA grey 2m

|                |                          |
|----------------|--------------------------|
| NVP value      | - %                      |
| POE class      | PoE+ acc. to IEEE802.3at |
| Current Rating | max. 1 A                 |

### Elektrische Eigenschaften

|                               |              |
|-------------------------------|--------------|
| Operating-/ tempering voltage | max. 50 V DC |
|-------------------------------|--------------|

### Übertragungstechnische Eigenschaften

|              |        |
|--------------|--------|
| Bandwidth    | 250MHz |
| Transmission | 5Gbit  |

### Standards, approvals, certifications

|                                   |               |
|-----------------------------------|---------------|
| Cabling standard                  | EN50173       |
| Connector                         | IEC 60603-7-4 |
| Oil resistant (acc. EN 60811-2-1) | False         |

### Available variants

| ArtNr.       | Bezeichnung                                    | Length | Längentoleranz |
|--------------|--|--------|----------------|
| K8100GR.0,25 | RJ45 Patch Cord Cat.6 U/UTP PVC CCA grey 0,25m | 0.25 m | ± 5 %          |
| K8100GR.0,5  | RJ45 Patch Cord Cat.6 U/UTP PVC CCA grey 0,5m  | 0.5 m  | ± 5 %          |
| K8100GR.1    | RJ45 Patch Cord Cat.6 U/UTP PVC CCA grey 1m    | 1.0 m  | ± 5 %          |
| K8100GR.1,5  | RJ45 Patch Cord Cat.6 U/UTP PVC CCA grey 1,5m  | 1.5 m  | ± 5 %          |
| K8100GR.2    | RJ45 Patch Cord Cat.6 U/UTP PVC CCA grey 2m    | 2.0 m  | ± 5 %          |
| K8100GR.3    | RJ45 Patch Cord Cat.6 U/UTP PVC CCA grey 3m    | 3.0 m  | ± 5 %          |
| K8100GR.5    | RJ45 Patch Cord Cat.6 U/UTP PVC CCA grey 5m    | 5.0 m  | ± 5 %          |
| K8100GR.7,5  | RJ45 Patch Cord Cat.6 U/UTP PVC CCA grey 7,5m  | 7.5 m  | ± 5 %          |
| K8100GR.10   | RJ45 Patch Cord Cat.6 U/UTP PVC CCA grey 10m   | 10.0 m | ± 5 %          |
| K8100GR.15   | RJ45 Patch Cord Cat.6 U/UTP PVC CCA grey 15m   | 15.0 m | ± 5 %          |
| K8100GR.20   | RJ45 Patch Cord Cat.6 U/UTP PVC CCA grey 20m   | 20.0 m | ± 5 %          |
| K8100GR.30   | RJ45 Patch Cord Cat.6 U/UTP PVC CCA grey 30m   | 30.0 m | ± 5 %          |

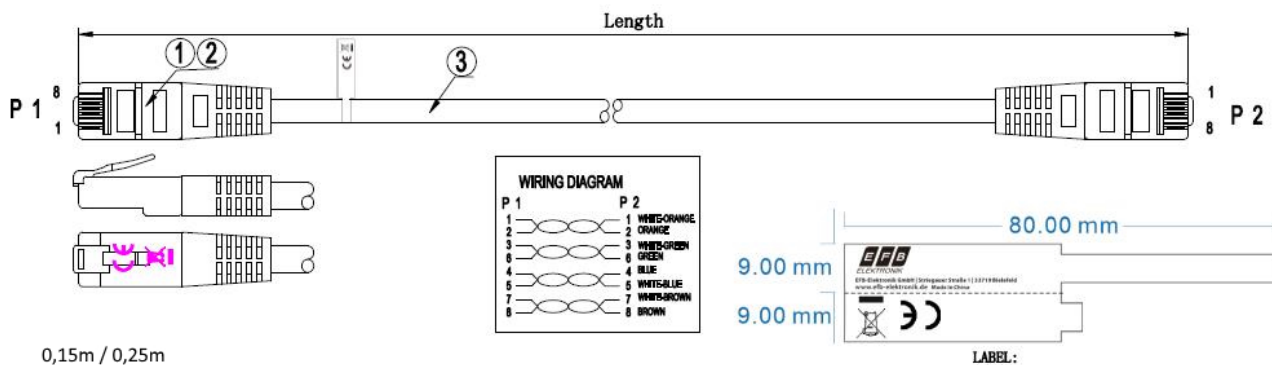
### Drawings

This datasheet was created automatically on 08-05-2024 . Technical changes reserved.



# DATASHEET

## RJ45 Patch Cord Cat.6 U/UTP PVC CCA grey 2m



This datasheet was created automatically on 08-05-2024 . Technical changes reserved.

