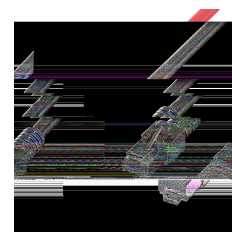
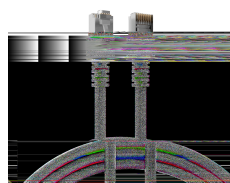
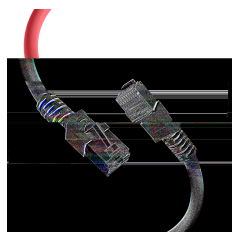
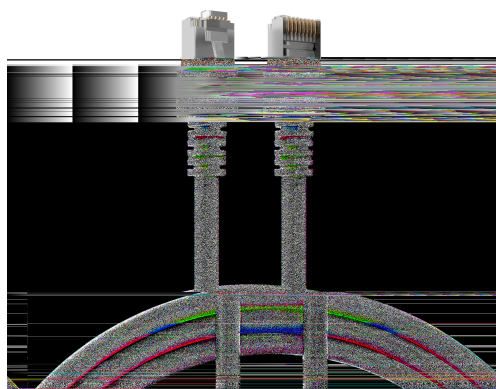


# DATASHEET

## RJ45 Patch Cord Cat.5e SF/UTP PVC CCA red 2m



### General data

The Cat.5e RJ45 patch cable ensures good characteristics for 2.5 Gigabit Ethernet applications. Due to the **double shielding**, the patch cable is even **better protected against EMC radiation**.

Cross section 4 x 2 x AWG26/7

Cast anti-kink grommet (**patented**)

Cable structure **SF/UTP**

**Length imprint on the grommet**

Conductor material CCA

### Allgemeine Daten

Suitable for degree of protection (IP)	IP20
Fire retardant version	False
Jacket Material	Polyvinylchlorid (PVC)
Model	Shielded
Length imprint	True
AWG-size	26/7

### General data

This datasheet was created automatically on 30-04-2024 . Technical changes reserved.



# DATASHEET

## RJ45 Patch Cord Cat.5e SF/UTP PVC CCA red 2m

Cable type	SF/UTP
Category	5e
Pin assignment	1:1
Locking lever	True
Allocation	acc. TIA/EIA 568B
Contacts	Gold plated $\mu$ " Vergoldet
Area of Application	Industrial Ethernet
Colour anti-kink sleeve	red
Colour outer sheath	red
Anti-kink sleeve	plugged in
Connector type	RJ45 standard
Halogen free	False

### Mechanical characteristics

Conductive shield	Selected shield contact
Bending radius	>25 mm
Mating cycles	2000

### Cable construction

Conductor Material	CCA
--------------------	-----

### Kabelaufbau

Type of connector connection 2	RJ45 8(8)
Total screening	65 %
Type of connector connection 1	RJ45 8(8)
Cable construction	4x2

### Cable sheath

Oil resistant (according to EN 60811-404)	False
Silicone-free	True

### Kabelmantel

Printing	SFTP 300 CAT.5E 26AWGX4P PATCH ISO/IEC 11801 & EN 50173 VERIFIED <a href="http://www.efb-elektronik.de">www.efb-elektronik.de</a>
Outer diameter of the cable	5.7 mm

This datasheet was created automatically on 30-04-2024 . Technical changes reserved.



# DATASHEET

## RJ45 Patch Cord Cat.5e SF/UTP PVC CCA red 2m

### Environmental conditions

Temperature range	-5 - 70 °C
-------------------	------------

### Electrical characteristics

Insulation Resistance	10 MΩ
Loop resistance	292 Ω/km
Contact Resistance	30 mΩ
POE class	PoE+ acc. to IEEE802.3at
Current Rating	max. 1 A
Resistance unbalance	5 %
Conductor resistance DC	146 Ω/km

### Elektrische Eigenschaften

Test voltage	1000 V DC, 1min
Operating-/ tempering voltage	max. 50 V DC

### Übertragungstechnische Eigenschaften

Transmission	2.5Gbit
Bandwidth	100MHz

### Standards, approvals, certifications

Cabling standard	EN50173
Connector	IEC 60603-7-3
Oil resistant (acc. EN 60811-2-1)	False

### Available variants

ArtNr.	Bezeichnung	Length	Längentoleranz
K5458.0,5	RJ45 Patch Cord Cat.5e SF/UTP PVC CCA red 0,5m	0.5 m	±5 %
K5458.1	RJ45 Patch Cord Cat.5e SF/UTP PVC CCA red 1m	1.0 m	±5 %
K5458.1,5	RJ45 Patch Cord Cat.5e SF/UTP PVC CCA red 1,5m	1.5 m	±5 %
K5458.2	RJ45 Patch Cord Cat.5e SF/UTP PVC CCA red 2m	2.0 m	±5 %
K5458.3	RJ45 Patch Cord Cat.5e SF/UTP PVC CCA red 3m	3.0 m	±5 %
K5458.5	RJ45 Patch Cord Cat.5e SF/UTP PVC CCA red 5m	5.0 m	±5 %
K5458.7,5	RJ45 Patch Cord Cat.5e SF/UTP PVC CCA red 7,5m	7.5 m	±5 %
K5458.10	RJ45 Patch Cord Cat.5e SF/UTP PVC CCA red 10m	10.0 m	±5 %
K5458.15	RJ45 Patch Cord Cat.5e SF/UTP PVC CCA red 15m	15.0 m	±5 %

This datasheet was created automatically on 30-04-2024 . Technical changes reserved.

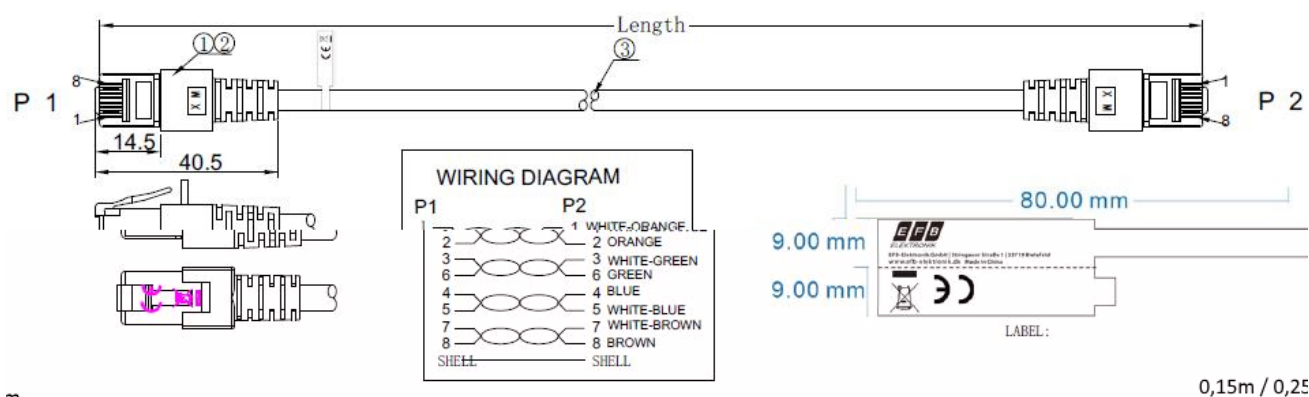


# DATASHEET

## RJ45 Patch Cord Cat.5e SF/UTP PVC CCA red 2m

K5458.20	RJ45 Patch Cord Cat.5e SF/UTP PVC CCA red 20m	20.0 m	±5 %
K5458.25	RJ45 Patch Cord Cat.5e SF/UTP PVC CCA red 25m	25.0 m	±5 %
K5458.30	RJ45 Patch Cord Cat.5e SF/UTP PVC CCA red 30m	30.0 m	±5 %

### Drawings



m

This datasheet was created automatically on 30-04-2024 . Technical changes reserved.

