

Everon® Copper Datacom KS500S Shielded Jack Cat.6A, Keystone, pack of 24

CORNING

Part Number:
KAXBSM-00104-C001-BP

The KS500S Keystone jack is an easy to assemble RJ45 jack for all applications, that does not require any special tools. The versatile KS500S supports both LAN and data centre applications with maximum performance and is therefore suitable for all current applications such as 10GBase-T.

The 3-way cable entry and standard Keystone dimensions support space-saving installations, e.g. in a surface-mount box with low installation depth, as well as in a 48-port patch panel in just 1U. The integrated self-closing dust shutter prevents dirt from entering the contact surfaces at any time. The jack is backwards compatible and supports RJ11/RJ12 connectors. The IDC design allows the use of only one jack to accommodate 4-pair AWG 22-26 solid conductors or AWG26/27 stranded conductors for T568A or T568B.

Strain relief is provided by the housing bracket of the jack or optionally by an additional clip using a cable tie.

The jack complies with Cat.6A component performance according to ISO/IEC and supports 4PPoE according to IEEE 802.3bt.

The jack's design ensures high quality and transmission performance, which is continuously monitored by an independent test laboratory (GHMT PVP).

Features and Benefits

Integrated self-closing dust shutter

No additional dust shutters required for faceplates. Captive dust protection of the IDC contacts for fail-safe connectivity

3-way cable entry

Three cable entry points (70°, 180° straight and 250°) for space and flexibility, ensuring cable minimum bend radius is not compromised

One jack accommodates solid and stranded conductors

Suitable for AWG 22-26 solid or AWG26/27 stranded wires

Easy installation

No special tools required, reduces installation time

Supports high port density with options to configure 48 ports in a 1U or 24 ports in a 1/2U panel

Minimizes the need for excessive hardware, optimizes space and efficiency

Eco-friendly bulk packs

Reduced packaging and weight

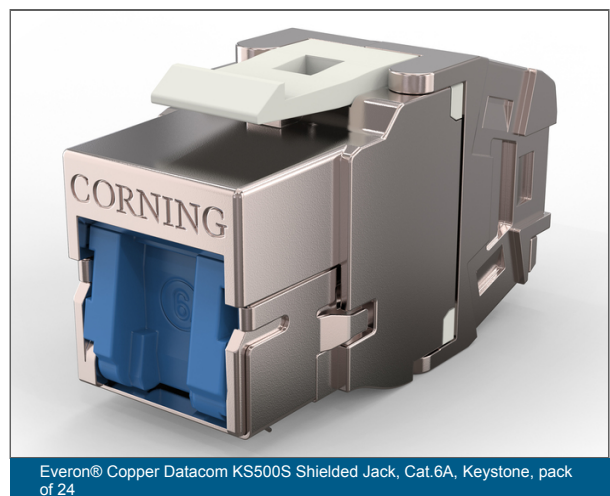
Tested and approved for Power over Ethernet applications (PoE/PoE+/4PPoE) according to IEEE 802.3af, IEEE 802.3at and IEEE 802.3bt up to 90W

Downward compatible RJ45 jack

Seamless connectivity, regardless of mismatched connectors (RJ11/12)

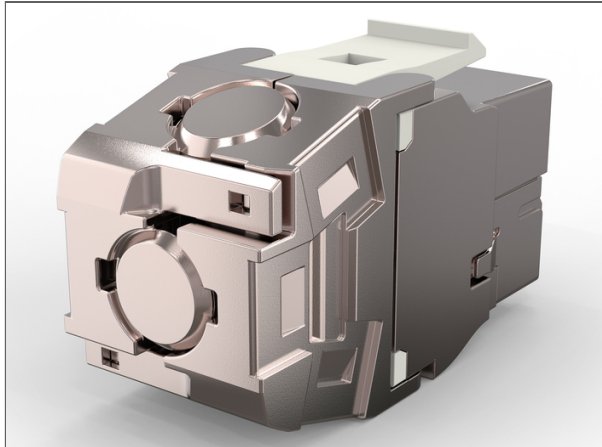


Everon® Copper Datacom KS500S Shielded Jack, Cat.6A, Keystone, pack of 24



Everon® Copper Datacom KS500S Shielded Jack, Cat.6A, Keystone, pack of 24

Everon® Copper Datacom KS500S Shielded Jack Cat.6A, Keystone, pack of 24



Everon® Copper Datacom KS500S Shielded Jack, Cat.6A, Keystone, pack of 24

Specifications

General Specifications	
Dust protection	Yes
Category	6A
Bandwidth	500 MHz
Standards	
Flame retardance	Class UL94 V-0
RoHS	Free of hazardous substances according to RoHS 2011/65/EU
Transmission performance link	Channel and permanent link class EA according to ISO/IEC 11801 (latest edition) and EN50173 (latest edition), 10 Gigabit Ethernet according to IEEE 802.3an, Transmission of analog and digital voice, image and data signals up to 500 MHz and 10 GBit/s
Design And Test Criteria	Tested and approved for Power over Ethernet applications (PoE/PoE+/4PPoE) according to IEEE 802.3af, IEEE 802.3at and IEEE 802.3bt up to 90W, Type 4 Class 8 Component certificate Category 6A according to ISO/IEC 11801 and IEC60603-7-51

Everon® Copper Datacom KS500S Shielded Jack Cat.6A, Keystone, pack of 24



Standards

Component Standard	Cat. 6A (subscript) according to component standard IEC 60603-51, ISO/IEC 11801 (latest edition), EN50173 (latest edition) and TIA/EIA
--------------------	--

Environmental Conditions

Environmental compatibility	Recyclable and free of heavy metal
Halogen-free	Yes
Temperature range, installation	-40 °C to 70 °C
Temperature range, operation	-10 °C to 60 °C

Design

Jack Type	RJ45 - 8/8
Number of Pieces	4
Housing material	Die-Cast
Housing colour	Silver
Cable entry type	Three variable cable inputs (180° straight, 250° and 70°)
Wire Conductor+Insulation diameter max.	1.6 mm
Cable diameter	9 mm
Conductor	AWG 22-26 solid conductors or AWG 26 - 27 stranded conductors

Mechanical Specifications

Durability of RJ45 Jack (PoE)	≥ 750 mating cycles under load (52 volt, 860 mA, 90 watt) in compliance with technical transmission parameters
Durability of RJ45 Jack	≥ 750 mating cycles possible, EN 186000-1, test 4.5.32
Contact surface	Gold pad in contact area
Reproducibility	Several times reusable
Solid Wire Diameter	1 mm to 1.6 mm

Everon® Copper Datacom KS500S Shielded Jack Cat.6A, Keystone, pack of 24

CORNING

Electrical Specifications

Input to output DC Resistance Unbalance	< 50 mΩ
Input to output DC Resistance	< 200 mΩ
Electric strength DC (conductor/conductor)	1 kV / 1min (wire-wire, Adjacent Contacts)
Insulation Resistance	Test Voltage (100VDC) > 500 MΩ
Voltage rating	Less than 75 V DC max and less than 50 V ACC max

Dimensions

Height	19.6 mm
Width	14.5 mm
Depth	37 mm

Ordering Information

Product Number	KAXBSM-00104-C001-BP
Units per delivery	24/1



Corning Optical Communications GmbH & Co. KG • Leipziger Strasse 121 • 10117 Berlin, Germany
00 800 2676 4641 • FAX: • www.corning.com/opcomm/emea

A complete listing of the trademarks of Corning Optical Communications is available at www.corning.com/opcomm/emea/trademarks. Corning Optical Communications is ISO 9001 and ISO 14001 certified. © 2026 Corning Optical Communications. All rights reserved.