

STANDARD 19" ALUMINUM PDU's

- Housing: Aluminum-alloy shell
- Rated Input Voltage : 250 VAC 50/60 Hz.
- Max Input Current :16A
- Power cord: 1.5 m (3x1,5 mm²)
- Protection Options: Surge Protector, One/Two Poles Circuit Breaker
- Mountable to 19! mounting rails vertically or horizontally

SCHUKO TYPE

Product Code

PB-S04-100-116
 PB-S04-020-116
 PB-S06-100-116
 PB-S06-020-116
 PB-S08-100-116
 PB-S08-020-116
 PB-S12-100-116
 PB-S12-020-116
 PB-S16-100-116
 PB-S16-020-116
 PB-S18-100-116
 PB-S18-020-116

Product Description

1U 19! Aluminium 4 way with on/off switch
 1U 19! Aluminium 4 way with circuit breaker
 1U 19! Aluminium 6 way with on/off switch
 1U 19! Aluminium 6 way with circuit breaker
 1U 19! Aluminium 8 way with on/off switch
 1,5U 19! Aluminium 8 way with circuit breaker
 1,5U Vertical Aluminium 12 way with on/off switch
 1,5U Vertical Aluminium 12 way with circuit breaker
 1,5U Vertical Aluminium 16 way with on/off switch
 1,5U Vertical Aluminium 16 way with circuit breaker
 1,5U Vertical Aluminium 18 way with on/off switch
 1,5U Vertical Aluminium 18 way with circuit breaker



FRENCH TYPE

Product Code

PB-F06-100-116
 PB-F06-020-116
 PB-F08-100-116
 PB-F08-020-116
 PB-F12-100-116
 PB-F12-020-116
 PB-F16-100-116
 PB-F16-020-116

Product Description

1U 19! Aluminium 6 way with on/off switch
 1U 19! Aluminium 6 way with circuit breaker
 1U 19! Aluminium 8 way with on/off switch
 1,5U 19! Aluminium 8 way with circuit breaker
 1,5U Vertical Aluminium 12 way with on/off switch
 1,5U Vertical Aluminium 12 way with circuit breaker
 1,5U Vertical Aluminium 16 way with on/off switch
 1,5U Vertical Aluminium 16 way with circuit breaker



UK TYPE

Product Code

PB-U05-100-116
 PB-U05-020-116
 PB-U07-100-116
 PB-U08-100-116
 PB-U08-020-116
 PB-U12-100-116
 PB-U12-020-116
 PB-U16-100-116
 PB-U16-020-116
 PB-U18-100-116
 PB-U18-020-116

Product Description

1U 19! Aluminium 5 way with on/off switch
 1U 19! Aluminium 5 way with circuit breaker
 1,5U 19! Aluminium 7 way with on/off switch
 1,5U 19! Aluminium 8 way with on/off switch
 1,5U 19! Aluminium 8 way with circuit breaker
 1,5U Vertical Aluminium 12 way with on/off switch
 1,5U Vertical Aluminium 12 way with circuit breaker
 1,5U Vertical Aluminium 16 way with on/off switch
 1,5U Vertical Aluminium 16 way with circuit breaker
 1,5U Vertical Aluminium 18 way with on/off switch
 1,5U Vertical Aluminium 18 way with circuit breaker



PDU Solutions

Metered PDU#s



Numeric Led display with amperimeter module Measures current between 0 and 30 A



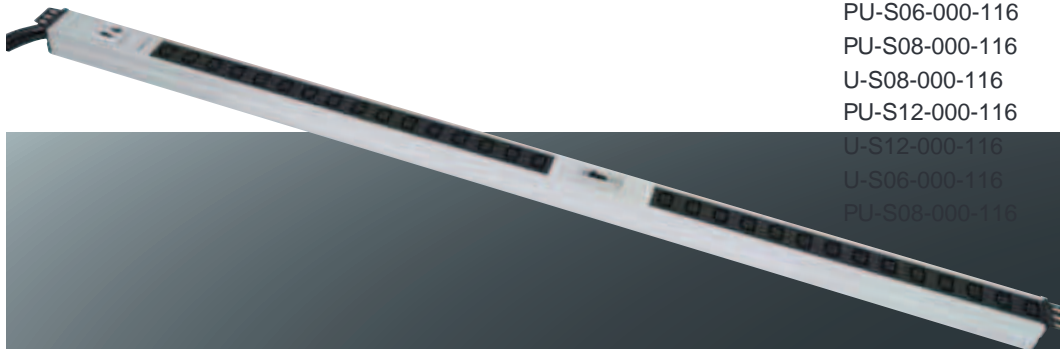
Voltmeter module with Numeric Led display. Measures voltage between 0 and 500 VAC

PA-S06-000-116
PV-S06-000-116
PA-S08-000-116
PV-S08-000-116
PA-S12-000-116
PV-S12-000-116
PA-S16-000-116
PV-S16-000-116
PA-S18-000-116
PV-S18-000-116

3-Phase PDU#s

Used for Datacenter applications
Aluminum housing
Mountable to 19" mounting rails vertically or horizontally
3 meter cable included

PB-C18-010-316
PB-C24-010-332
~~PB-S06-000-332~~
PU-S06-000-116
PU-S08-000-116
U-S08-000-116
PU-S12-000-116
U-S12-000-116
U-S06-000-116
PU-S08-000-116



Horizontal PDU

The horizontal PDU delivers a cost-effective power distribution solution for your server rack. 1U PDU can be mounted horizontally in any server rack to provide eight 16A ports outlets, and features a rugged steel casing to ensure maximum durability.

The front of the PDU is furnished with eight LEDs to indicate power in every socket and an ampermeter to monitor the total load of the PDU.

To prevent costly breakdowns of connected devices, the horizontal PDU features a built-in eight individual glass fuses.

Highlights

- Rated Input Voltage : 250 VAC 50/60 Hz.
- Max Input Current :16A
- 19! 1U Architecture
- Protection: 8 Glass Fuse for each sockets
- Power light indicator for each sockets
- Ampermeter that shows total load

Product Description

1U 19! Steel Frame 8 C13 Sockets PDU

Product Code

PA-C08-130-116



PDU Solutions

Extendable PDU

Extendable PDU is the most suitable solution to the users who want to control and maximize the space efficiency in the rack. The special design that is composed of two parts; the control unit and extension units, offers maximum modularity. PDU provides 28 outputs by connecting 4 extension units to one control unit. The control unit is zero-U rack mountable. You can install to the side or back of the rack without sacrificing any valuable space in the rack. Also the extension bars can be installed to the frame of the rack.

Highlights

- Rated Input Voltage : 250 VAC 50/60 Hz.
- Max Input Current :32A
- Zero-U Architecture
- Modular with extension units
- Protection: Two Poles Circuit Breaker for each extension unit
- Power light indicator for each extension unit
- Hot swappable

Control Unit



Extension Unit



Product Description

Control Unit with 4 Branch
Extension Unit with 7 C13 Sockets

Product Code

PE-040-020-132
PF-C07-000-116



Modular PDU

Canovate Modular PDU offers flexibility to design your own PDU that exactly meet your needs. The special light weighted housing design is the key to modularity. Also the wide range of modules, which enable users to mix and match socket styles, let you arrange the socket density in your applications.

In addition to product choice and configuration flexibility the modules are also hot swappable. That means you can disconnect, change or swap any of the modules that is installed without stopping the whole PDU. Just detach devices that is connected to the module, remove the original and snap-in the replacement.

Highlights

- High flexibility options
- Wide range of modules with different type of sockets
- You define the density and the type of the socket in one housing
- Fuse and power light indicator in each modules
- High quality aluminum housing
- Hot swappable modules minimize network down time

Single Input



Master Circuit Breaker Module



3 way UK module



4 way Schuco module



5 way IEC module



Product Description

Aluminum Housing with 2 Module Capacity
Aluminum Housing with 4 Module Capacity
Aluminum Housing with 6 Module Capacity

Product Description

Master Circuit Breaker Module
3 way UK module
4 way Schuco module
5 way IEC module

Product Code

PM-002
PM-004
PM-006

Product Code

P&-B02-010-116
P&-U03-000-116
P&-S04-000-116
P&-C05-000-116

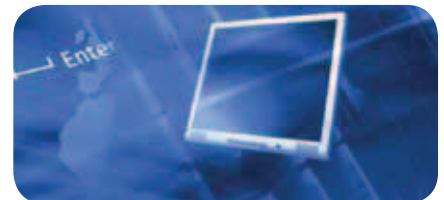


PDU Solutions

IP PDU is a simple solution where reliable power distribution for equipment racks, data center applications or house is needed, in addition to the branch circuit protection. IP PDU also provides power control and environmental monitoring using internet connection. There won't be any problem like disconnection of server, switch-lock or router-lock especially in IT center. Reset your routers with remote control. Control your home appliances through internet. You can control your home appliances by your mobile phone or any internet connection.

Highlights

- Internal web server. Port 80 or user assignable.
- 10 electrical outlet can be controlled via web browser or time slicing functions. Time slicing functions provides time programs for each outlet.
- Authorized entry
- E-mail sending (Internal SMTP client)
- RJ45 Ethernet Connector.
- Frame camera support (for version KIP-PDU12)
- Each outlet sockets can be controlled, depending on sensors status.
- Measurement of environmental temperature and humidity.
- 10 electrical outlet box
- Each electrical outlet can be named unique.
- Wake On LAN (WOL) support. Wake-on-LAN is an ethernet computer networking standard that allows a computer to be turned on or woken up by a network message.
- Time verification from time servers (Internal SNTP client)
- 250VAC/8A for each electrical outlet box. Total 16/25A.
- High frequency and interference filter
- Protection of electrical discharges in mains line
- ABS plastic body
- 3m * Cable length
- Power : 2.5wat/6watt max.
- Color : Black (ABS)
- Language options : English



Product Description

IP-PDU 10 way Schuko Sockets

Product Code

PP-S10-000-116



IP Switched POPS PDU

Smart Switched PDU#s become integral parts of modern datacenter environment to control your energy consumption, to control/monitor your active devices remotely and to monitor all environmental factors, which will affect the performance of your datacenter.

Switch POPS (Per Outlet Power Sensing) units monitor, control and manage servers (Blade servers) and IT equipment and the equipment cabinet infrastructure that houses them POPS Power information per individual outlet includes: current load (A), voltage (V), power (kW), apparent power (VA), crest factor, and power factor. Using grouping technology, power information is available per device, groups of devices (application), individual Cabinet PDU or cabinet. kW and kW-hour power information that can be utilized for billing your customers in Colocation datacenters and to take power reports for controlling your energy consumption

Highlights

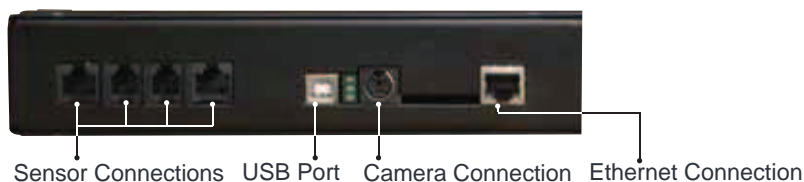
- Per Outlet Power Sensing and Control: Current Load (A), Voltage (V), Power (kW), Apparent Power (VA), Crest Factor and Power Factor
- RMS current and active power measurement for input power (230V sinus wave)
- Voltage, RMS current and active power measurement per outlet including preset condition control
- Voltmeter , amperemeter display, integrated temperature and humidity sensors on the front side
- Slots to connect temperature, relative humidity, water leakage, air %ow and door sensors (4 wired sensors)
- Camera connection capability
- Optional monitoring system connectivity to enhance monitoring capabilities such as room temperature, room humidity Natural gas, LPG gas, Smoke, Noisy, PIR movement sensors.
- Optional wireless sensor connectivity (up to 9 sensors)
- Industry leading accuracy level: 97+ accuracy in measuring
- Network Access and Per Outlet Control
- Control Conditions for Alarm Noti"cation
- HTTP/HTTPs Web Con"uration ' Control
- SNMP Management ' Event Noti"cation
- Zero U Enclosure
- Secure Access - SSH or SSL Protection
- Firmware Flash Upgradeable
- Http, SMTP, SNMP, SNTP support
- E-mail sending feature incase of any problem

Models:

1U Horizontal POPS PDU: 8 x C13 outlets

1U Vertical POPS PDU: 12x C13 outlets

1U Vertical (zero U) POPS PDU: 24 outlets (3x6 C13 plus 3x2 C19)



Product Description

Pops IP-PDU 8 way IEC C13 Sockets
Pops IP-PDU 12 way IEC C13 Sockets
Pops IP-PDU 24 way IEC C13/C19 Sockets

Product Code

PP-C08-020-116
PP-C12-020-116
PP-C24-020-116