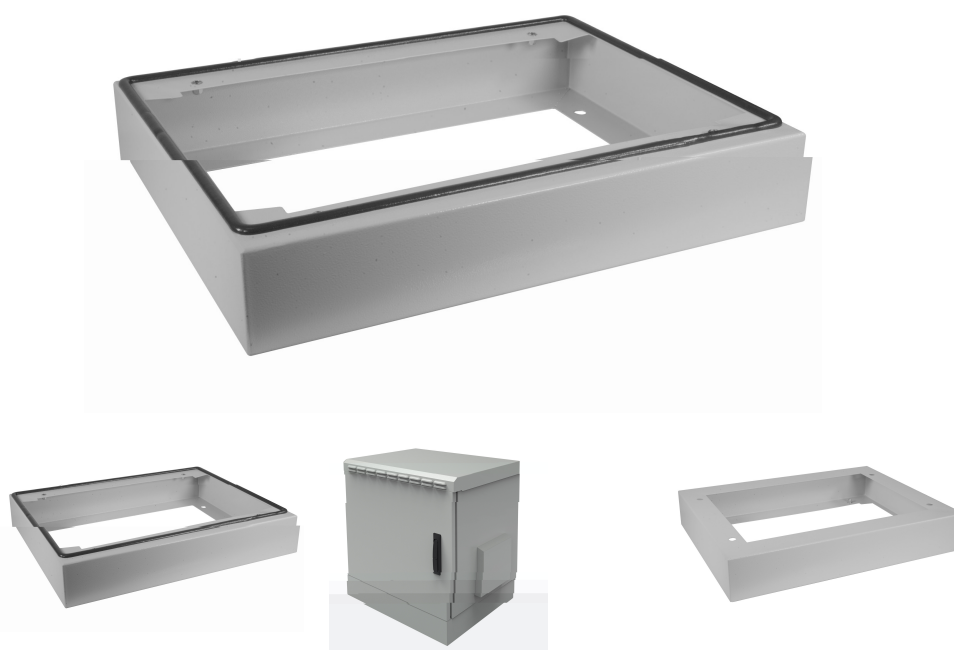


DATASHEET

Plinth for 19" Wall Housing IP55, Depth 600 mm, RAL7035



General data

For using the IP55 wall housings (Art.-No. 6917xxIP55.x) as standing cabinet
 Plinth height 100 mm, depth 600 mm
 Suitable for plane surfaces like e.g. concrete
 Screw mounting at the wall housing
 Openings for mounting at the floor
 Material steel sheet
 Paint finish RAL7035, light grey

Allgemeine Daten

Suitable for cable patch	True
Suitable for aeration/de-aeration	False
Suitable for outdoor set-up	False
Model	Base complete

General data

Material	Steel
Levellable	False
Cabinet Series	other

This datasheet was created automatically on 09-05-2024 . Technical changes reserved.



DATASHEET

Plinth for 19" Wall Housing IP55, Depth 600 mm, RAL7035

Available variants

ArtNr.	Bezeichnung	Colour	Height	Suitable for enclosure building depth	Suitable for enclosure building width	Breite	Tiefe	Geeignet für	RAL-Nummer
691750WIP.2	Plinth for 19" Wall Housing IP55, Depth 600 mm, RAL7035	grey	100 mm	600 mm	600 mm	600 mm	600 mm	Wandgehäuse IP55	7035

This datasheet was created automatically on 09-05-2024 . Technical changes reserved.

