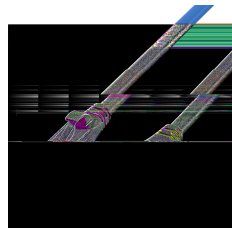
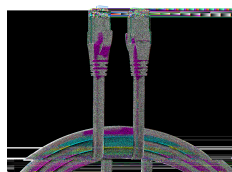
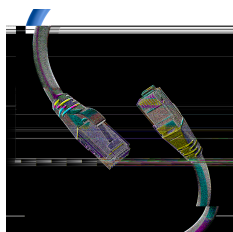
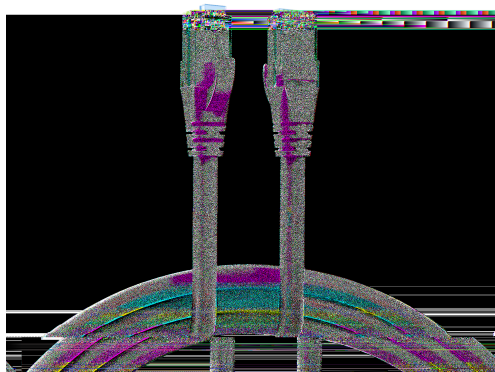


DATASHEET

RJ45 Patch Cord Cat.6A U/UTP LSZH Premium 500MHz blue 2m



General data

The unshielded Cat.6A RJ45 premium patch cable ensures very good characteristics for **10 Gigabit Ethernet** applications. The moulded grommet captivates with its **slim design** and thus simplifies the insertion process in cramped conditions.

Cross section 4 x 2 x **AWG24/7**

Cast anti-kink grommet with length imprint, slim design

Allgemeine Daten

Model	Unshielded
Suitable for degree of protection (IP)	IP20
Fire retardant version	True
Jacket Material	LSZH
AWG-size	24/7
Length imprint	True

General data

UL approved	True
-------------	------

This datasheet was created automatically on 09-05-2024 . Technical changes reserved.



DATASHEET

RJ45 Patch Cord Cat.6A U/UTP LSZH Premium 500MHz blue 2m

Connector type	RJ45 Standard blue
Colour anti-kink sleeve	blue
Pin assignment	1:1
Locking lever	True
Allocation	acc. TIA/EIA 568B
Cable type	U/UTP
Area of Application	Structured cabling
Anti-kink sleeve	plugged in
Contacts	50 µ" gold plated
Colour outer sheath	blue
Halogen free	True
Category	6A (TIA)

Mechanical characteristics

Bending radius	30 mm
Mating cycles	2000

Cable construction

Conductor Material	Copper
--------------------	--------

Kabelaufbau

Type of connector connection 2	RJ45 8(8)
Type of connector connection 1	RJ45 8(8)
Cable construction	4x2

Cable sheath

Low smoke	True
Oil resistant (according to EN 60811-404)	False
Flame retardant	acc. IEC60332-1

Kabelmantel

Halogen-free	True
Outer diameter of the cable	6.0 mm
Printing	Cat.6A PREMIUM Patchcord U/UTP 4x2xAWG24/7 ISO/IEC11801 TIA/EIA-568-C.2 ***10Gigabit Ethernet***

This datasheet was created automatically on 09-05-2024 . Technical changes reserved.



DATASHEET

RJ45 Patch Cord Cat.6A U/UTP LSZH Premium 500MHz blue 2m

Environmental conditions

Temperature range	0 - 60 °C
-------------------	-----------

Electrical characteristics

NVP value	- %
POE class	PoE+ acc. to IEEE802.3at
Current Rating	max. 1 A

Elektrische Eigenschaften

Operating-/ tempering voltage	max. 50 V DC
-------------------------------	--------------

Übertragungstechnische Eigenschaften

Transmission	10Gbit
Bandwidth	500MHz

Standards, approvals, certifications

Cabling standard	EN50173
Connector	IEC 60603-7-41
Oil resistant (acc. EN 60811-2-1)	False

Available variants

ArtNr.	Bezeichnung	Length	Längentoleranz
K8109BL.0,15	RJ45 Patch Cord Cat.6A U/UTP LSZH Premium 500MHz blue 0,15m	0.15 m	±5 %
K8109BL.0,25	RJ45 Patch Cord Cat.6A U/UTP LSZH Premium 500MHz blue 0,25m	0.25 m	±5 %
K8109BL.0,5	RJ45 Patch Cord Cat.6A U/UTP LSZH Premium 500MHz blue 0,5m	0.5 m	±5 %
K8109BL.1	RJ45 Patch Cord Cat.6A U/UTP LSZH Premium 500MHz blue 1m	1.0 m	±5 %
K8109BL.1,5	RJ45 Patch Cord Cat.6A U/UTP LSZH Premium 500MHz blue 1,5m	1.5 m	±5 %
K8109BL.2	RJ45 Patch Cord Cat.6A U/UTP LSZH Premium 500MHz blue 2m	2.0 m	±5 %
K8109BL.3	RJ45 Patch Cord Cat.6A U/UTP LSZH Premium 500MHz blue 3m	3.0 m	±5 %
K8109BL.5	RJ45 Patch Cord Cat.6A U/UTP LSZH Premium 500MHz blue 5m	5.0 m	±5 %
K8109BL.7,5	RJ45 Patch Cord Cat.6A U/UTP LSZH Premium 500MHz blue 7,5m	7.5 m	±5 %
K8109BL.10	RJ45 Patch Cord Cat.6A U/UTP LSZH Premium 500MHz blue 10m	10.0 m	±5 %
K8109BL.15	RJ45 Patch Cord Cat.6A U/UTP LSZH Premium 500MHz blue 15m	15.0 m	±5 %

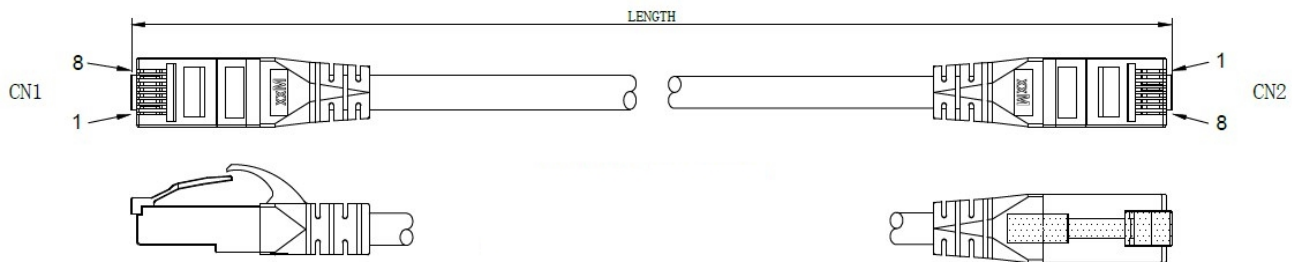
Drawings

This datasheet was created automatically on 09-05-2024 . Technical changes reserved.



DATASHEET

RJ45 Patch Cord Cat.6A U/UTP LSZH Premium 500MHz blue 2m



This datasheet was created automatically on 09-05-2024 . Technical changes reserved.

