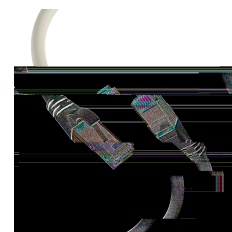
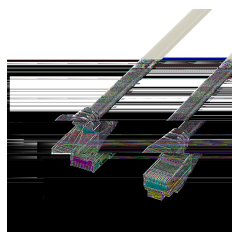
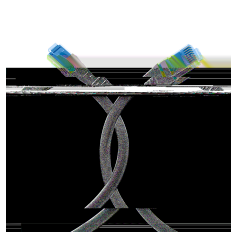
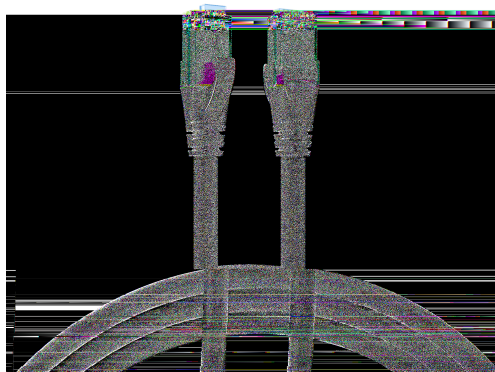


# DATASHEET

## RJ45 Patch Cord Cat.6A U/UTP LSZH Premium 500MHz grey 2m



### General data

The unshielded Cat.6A RJ45 premium patch cable ensures very good characteristics for **10 Gigabit Ethernet** applications. The moulded grommet captivates with its **slim design** and thus simplifies the insertion process in cramped conditions.

Cross section 4 x 2 x **AWG24/7**

Cast anti-kink grommet with length imprint, slim design

### Allgemeine Daten

Model	Unshielded
Suitable for degree of protection (IP)	IP20
Fire retardant version	True
Jacket Material	LSZH
AWG-size	24/7

### General data

Connector type	RJ45 Standard blue
Pin assignment	1:1

This datasheet was created automatically on 09-05-2024 . Technical changes reserved.



# DATASHEET

## RJ45 Patch Cord Cat.6A U/UTP LSZH Premium 500MHz grey 2m

Locking lever	True
Colour anti-kink sleeve	grey
Allocation	acc. TIA/EIA 568B
Cable type	U/UTP
Area of Application	Structured cabling
Colour outer sheath	grey
Anti-kink sleeve	plugged in
Contacts	50 µ" gold plated
Halogen free	True
Category	6A (TIA)

### Mechanical characteristics

Bending radius	30 mm
Mating cycles	2000

### Cable construction

Conductor Material	Copper
--------------------	--------

### Kabelaufbau

Type of connector connection 2	RJ45 8(8)
Type of connector connection 1	RJ45 8(8)
Cable construction	4x2

### Cable sheath

Low smoke	True
Oil resistant (according to EN 60811-404)	False
Flame retardant	acc. IEC60332-1

### Kabelmantel

Halogen-free	True
Outer diameter of the cable	6.0 mm
Printing	Cat.6A PREMIUM Patchcord U/UTP 4x2xAWG24/7 ISO/IEC11801 TIA/EIA-568-C.2 ***10Gigabit Ethernet***

### Environmental conditions

This datasheet was created automatically on 09-05-2024 . Technical changes reserved.



# DATASHEET

## RJ45 Patch Cord Cat.6A U/UTP LSZH Premium 500MHz grey 2m

Temperature range	0 - 60 °C
-------------------	-----------

### Electrical characteristics

NVP value	- %
POE class	PoE+ acc. to IEEE802.3at
Current Rating	max. 1 A

### Elektrische Eigenschaften

Operating-/ tempering voltage	max. 50 V DC
-------------------------------	--------------

### Übertragungstechnische Eigenschaften

Transmission	10Gbit
Bandwidth	500MHz

### Standards, approvals, certifications

Cabling standard	EN50173
Connector	IEC 60603-7-41
Oil resistant (acc. EN 60811-2-1)	False

### Available variants

ArtNr.	Bezeichnung	Length	Längentoleranz
K8109GR.0,15	RJ45 Patch Cord Cat.6A U/UTP LSZH Premium 500MHz grey 0,15m	0.15 m	±5 %
K8109GR.0,25	RJ45 Patch Cord Cat.6A U/UTP LSZH Premium 500MHz grey 0,25m	0.25 m	±5 %
K8109GR.0,5	RJ45 Patch Cord Cat.6A U/UTP LSZH Premium 500MHz grey 0,5m	0.5 m	±5 %
K8109GR.1	RJ45 Patch Cord Cat.6A U/UTP LSZH Premium 500MHz grey 1m	1.0 m	±5 %
K8109GR.1,5	RJ45 Patch Cord Cat.6A U/UTP LSZH Premium 500MHz grey 1,5m	1.5 m	±5 %
K8109GR.2	RJ45 Patch Cord Cat.6A U/UTP LSZH Premium 500MHz grey 2m	2.0 m	±5 %
K8109GR.3	RJ45 Patch Cord Cat.6A U/UTP LSZH Premium 500MHz grey 3m	3.0 m	±5 %
K8109GR.5	RJ45 Patch Cord Cat.6A U/UTP LSZH Premium 500MHz grey 5m	5.0 m	±5 %
K8109GR.7,5	RJ45 Patch Cord Cat.6A U/UTP LSZH Premium 500MHz grey 7,5m	7.5 m	±5 %
K8109GR.10	RJ45 Patch Cord Cat.6A U/UTP LSZH Premium 500MHz grey 10m	10.0 m	±5 %
K8109GR.15	RJ45 Patch Cord Cat.6A U/UTP LSZH Premium 500MHz grey 15m	15.0 m	±5 %

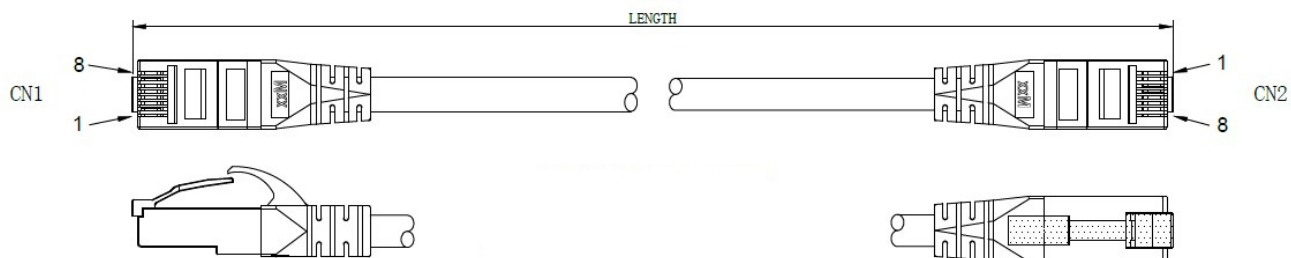
### Drawings

This datasheet was created automatically on 09-05-2024 . Technical changes reserved.



# DATASHEET

## RJ45 Patch Cord Cat.6A U/UTP LSZH Premium 500MHz grey 2m



This datasheet was created automatically on 09-05-2024 . Technical changes reserved.

