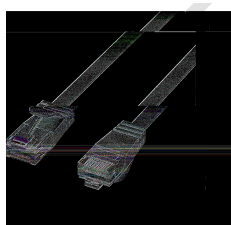
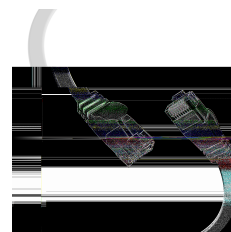
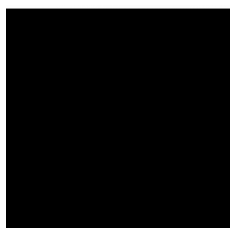
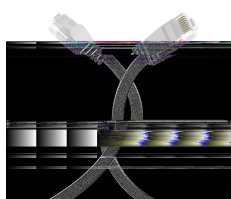


# DATASHEET

## RJ45 Flat Patch Cord Cat.6A U/UTP PVC white 2m



### General data

The unshielded Cat.6A RJ45 **flat patch cable** ensures excellent performance for **10 Gigabit Ethernet** applications. The flat patch cable impresses with its flat construction and is with **1.6mm height ideal for laying e.g. behind ledges or under a carpet**. The cast grommet captivates with its **slim design** and thus simplifies the plugging process in confined spaces.

Sheath material: PVC

Cross section: 4 x 2 x **AWG30 / 7**

Cable diameter: **6.0 x 1.6 mm**

Plug type: **short plug**

### Allgemeine Daten

Model	Unshielded
Suitable for degree of protection (IP)	IP20

This datasheet was created automatically on 08-05-2024 . Technical changes reserved.



# DATASHEET

## RJ45 Flat Patch Cord Cat.6A U/UTP PVC white 2m

Fire retardant version	False
Jacket Material	Polyvinylchlorid (PVC)
AWG-size	30/7

### General data

Connector type	RJ45 short version
Contacts	Gold plated $\mu$ " Gold plated
Pin assignment	1:1
Locking lever	True
Allocation	acc. TIA/EIA 568B
Colour anti-kink sleeve	white
Cable type	U/UTP
Anti-kink sleeve	moulded-on
Area of Application	Structured cabling
Colour outer sheath	white
Category	6A (TIA)
Halogen free	False

### Mechanical characteristics

Conductive shield	Selected shield contact
Mating cycles	2000
Bending radius	10 mm

### Cable construction

Conductor Material	Copper
--------------------	--------

### Kabelaufbau

Type of connector connection 2	RJ45 8(8)
Type of connector connection 1	RJ45 8(8)
Cable construction	4x2

### Cable sheath

Oil resistant (according to EN 60811-404)	False
Silicone-free	True

### Kabelmantel

This datasheet was created automatically on 08-05-2024 . Technical changes reserved.



# DATASHEET

## RJ45 Flat Patch Cord Cat.6A U/UTP PVC white 2m

Printing	SLIM PATCHCABLE U/UTP CAT.6A ***10GB*** www.efb-elektronik.de
Outer diameter of the cable	6.0*1.6 mm

### Environmental conditions

Temperature range	-20 - 55 °C
-------------------	-------------

### Electrical characteristics

Loop resistance	752 Ω/km
Impedance	100 ±15 Ω
Conductor resistance DC	376 Ω/km
Resistance unbalance	< 4 %
POE class	PoE+ acc. to IEEE802.3at
Current Rating	max. 1 A
NVP value	76 %
Insulation Resistance	100 MΩ

### Elektrische Eigenschaften

Test voltage	1000 V DC, 1min
Operating-/ tempering voltage	max. 50 V DC

### Übertragungstechnische Eigenschaften

Transmission	10Gbit
Bandwidth	500MHz

### Standards, approvals, certifications

Cabling standard	EN50173
Oil resistant (acc. EN 60811-2-1)	False
Connector	IEC 60603-7-51

### Available variants

ArtNr.	Bezeichnung	Length	Längentoleranz
K8107WS.0,25	RJ45 Flat Patch Cord Cat.6A U/UTP PVC white 0.25m	0.25 m	±5 %
K8107WS.0,5	RJ45 Flat Patch Cord Cat.6A U/UTP PVC white 0,5m	0.5 m	±5 %
K8107WS.1	RJ45 Flat Patch Cord Cat.6A U/UTP PVC white 1m	1.0 m	±5 %
K8107WS.1,5	RJ45 Flat Patch Cord Cat.6A U/UTP PVC white 1,5m	1.5 m	±5 %

This datasheet was created automatically on 08-05-2024 . Technical changes reserved.

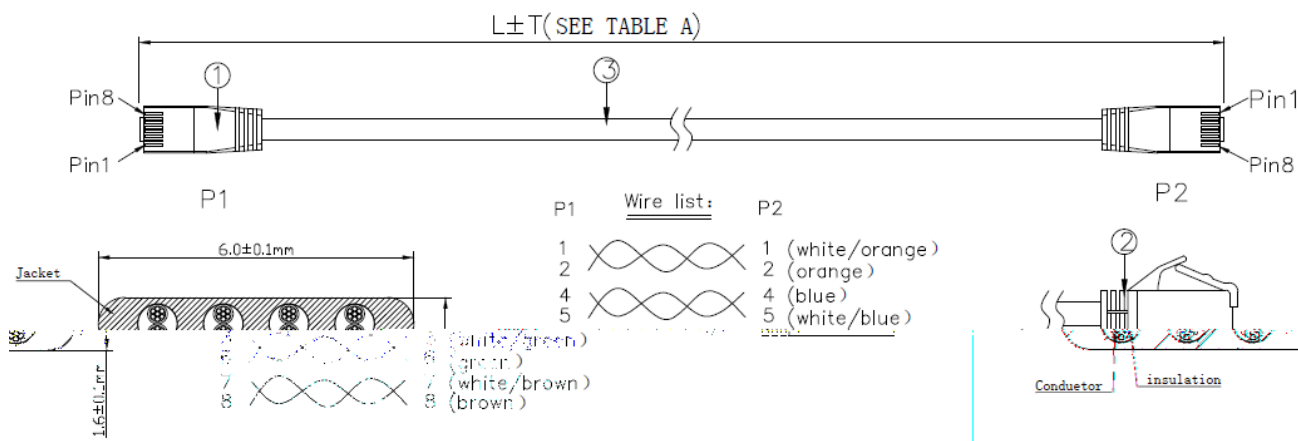


# DATASHEET

## RJ45 Flat Patch Cord Cat.6A U/UTP PVC white 2m

K8107WS.2	RJ45 Flat Patch Cord Cat.6A U/UTP PVC white 2m	2.0 m	±5 %
K8107WS.3	RJ45 Flat Patch Cord Cat.6A U/UTP PVC white 3m	3.0 m	±5 %
K8107WS.5	RJ45 Flat Patch Cord Cat.6A U/UTP PVC white 5m	5.0 m	±5 %

### Drawings



This datasheet was created automatically on 08-05-2024 . Technical changes reserved.

