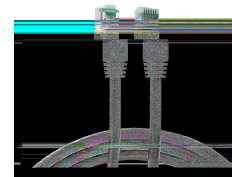
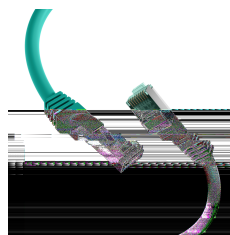
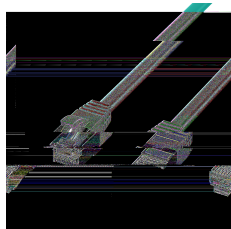
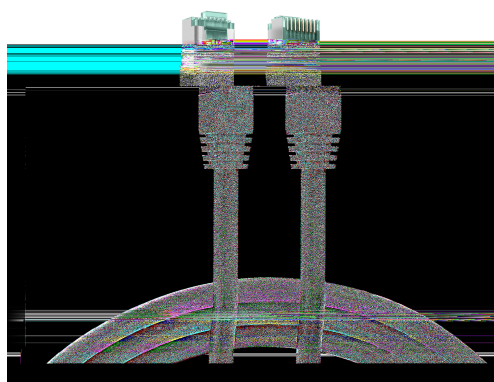


DATASHEET

RJ45 Patch Cord Cat.6A S/FTP LSZH green 2m



General data

The shielded Cat.6A RJ45 patch cable ensures excellent performance for **10 Gigabit** Ethernet applications. The moulded grommet captivates with its **slim design** and thus simplifies the insertion process in cramped conditions.

Cross section 4 x 2 x AWG27/7

Length imprint on boot

Available in **11 colours**

Allgemeine Daten

Suitable for degree of protection (IP)	IP20
AWG-size	27/7
Fire retardant version	True
Model	Shielded
Jacket Material	LSZH
Length imprint	True

General data

Colour anti-kink sleeve	green
Connector type	RJ45 Standard green

This datasheet was created automatically on 29-04-2024 . Technical changes reserved.



DATASHEET

RJ45 Patch Cord Cat.6A S/FTP LSZH green 2m

Cable type	S/FTP
Pin assignment	1:1
Locking lever	True
UL approbated	False
Contacts	Gold plated
Allocation	acc. TIA/EIA 568B
Colour outer sheath	green
Area of Application	Industrial Ethernet
Anti-kink sleeve	plugged in
Halogen free	True
Category	6A (TIA)

Mechanical characteristics

Conductive shield	Selected shield contact
Mating cycles	2000
Bending radius	>30 mm

Cable construction

Conductor Material	Copper
Raw cable	Cat.6A

Kabelaufbau

Type of connector connection 2	RJ45 8(8)
Type of connector connection 1	RJ45 8(8)
Total screening	80 %
Cable construction	4x2

Cable sheath

Low smoke	True
Oil resistant (according to EN 60811-404)	False
Silicone-free	True
Flame retardant	True

Kabelmantel

Printing	Cat.6A PATCH S/FTP 4x2xAWG27/7 LSZH ISO/IEC11801 ANSI/TIA-568-C.2 ***10Gigabit Ethernet*** www.efb-elektronik.de
----------	---

This datasheet was created automatically on 29-04-2024 . Technical changes reserved.



DATASHEET

RJ45 Patch Cord Cat.6A S/FTP LSZH green 2m

Outer diameter of the cable	6.0 mm
Halogen-free	True

Environmental conditions

Temperature range	-20 - 60 °C
-------------------	-------------

Electrical characteristics

Insulation Resistance	10 MΩ
Loop resistance	370 Ω/km
Impedance	100 ±15 Ω
Contact Resistance	30 mΩ
NVP value	74 %
Conductor resistance DC	185 Ω/km
POE class	PoE+ acc. to IEEE802.3at
Resistance unbalance	3 %
Current Rating	max. 1 A

Elektrische Eigenschaften

Test voltage	1000 V DC, 1min
Operating-/ tempering voltage	max. 50 V DC

Übertragungstechnische Eigenschaften

Transmission	10Gbit
Bandwidth	500MHz

Standards, approvals, certifications

Cabling standard	EN50173
Oil resistant (acc. EN 60811-2-1)	False
Connector	IEC 60603-7-51

Available variants

ArtNr.	Bezeichnung	Length	Längentoleranz
MK6001.0,15GR	RJ45 Patch Cord Cat.6A S/FTP LSZH green 0,15m	0.15 m	±5 %
MK6001.0,25GR	RJ45 Patch Cord Cat.6A S/FTP LSZH green 0,25m	0.25 m	±5 %
MK6001.0,5GR	RJ45 Patch Cord Cat.6A S/FTP LSZH green 0,5m	0.5 m	±5 %
MK6001.1GR	RJ45 Patch Cord Cat.6A S/FTP LSZH green 1m	1.0 m	±5 %

This datasheet was created automatically on 29-04-2024 . Technical changes reserved.

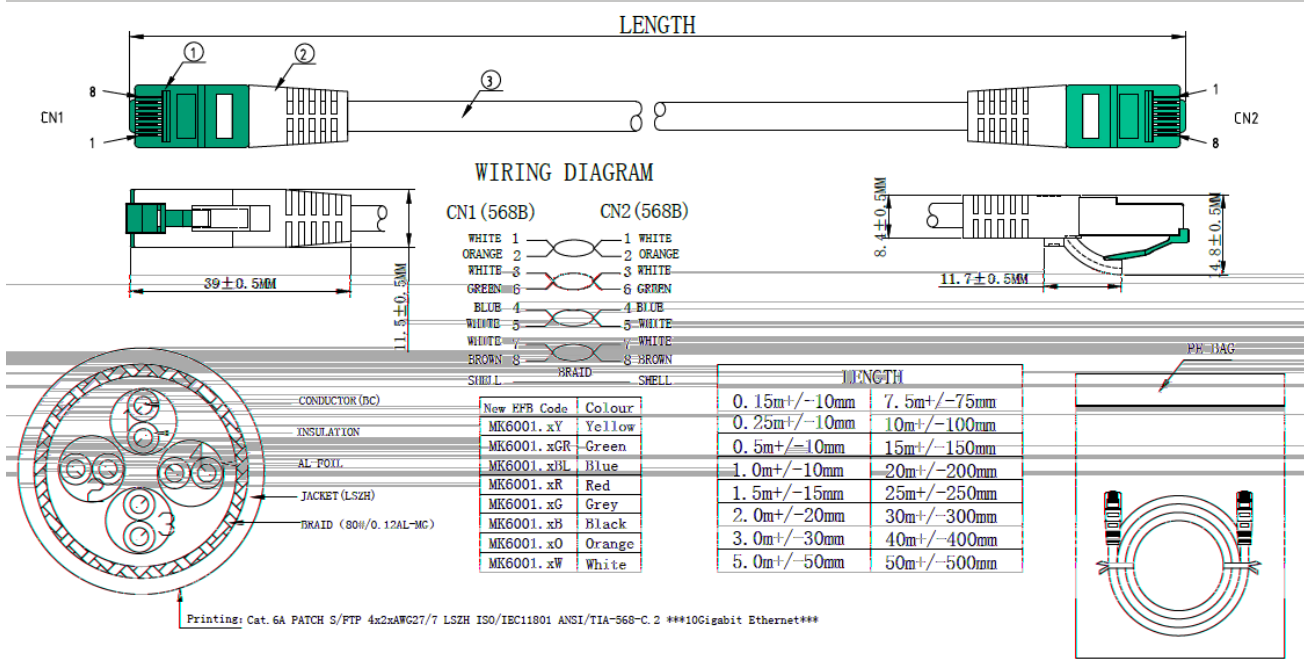


DATASHEET

RJ45 Patch Cord Cat.6A S/FTP LSZH green 2m

MK6001.1,5GR	RJ45 Patch Cord Cat.6A S/FTP LSZH green 1,5m	1.5 m	±5 %
MK6001.2GR	RJ45 Patch Cord Cat.6A S/FTP LSZH green 2m	2.0 m	±5 %
MK6001.3GR	RJ45 Patch Cord Cat.6A S/FTP LSZH green 3m	3.0 m	±5 %
MK6001.5GR	RJ45 Patch Cord Cat.6A S/FTP LSZH green 5m	5.0 m	±5 %
MK6001.7,5GR	RJ45 Patch Cord Cat.6A S/FTP LSZH green 7,5	7.5 m	±5 %
MK6001.10GR	RJ45 Patch Cord Cat.6A S/FTP LSZH grün 10m	10.0 m	±5 %
MK6001.15GR	RJ45 Patch Cord Cat.6A S/FTP LSZH green 15m	15.0 m	±5 %
MK6001.20GR	RJ45 Patch Cord Cat.6A S/FTP LSZH green 20m	20.0 m	±5 %
MK6001.25GR	RJ45 Patch Cord Cat.6A S/FTP LSZH green 25m	25.0 m	±5 %
MK6001.30GR	RJ45 Patch Cord Cat.6A S/FTP LSZH green 30m	30.0 m	±5 %
MK6001.40GR	RJ45 Patch Cord Cat.6A S/FTP LSZH green 40m	40.0 m	±5 %
MK6001.50GR	RJ45 Patch Cord Cat.6A S/FTP LSZH green 50m	50.0 m	±5 %

Drawings



This datasheet was created automatically on 29-04-2024 . Technical changes reserved.

