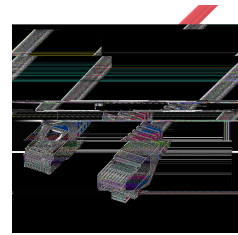
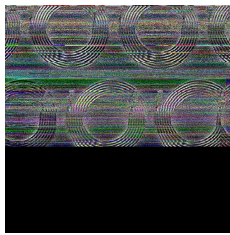
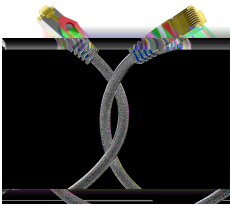
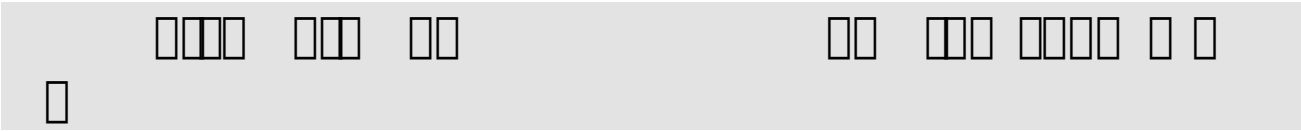


# DATASHEET



## General data

This cable is designed for high-speed data transmission. It features a **slim design** for easy installation in tight spaces. The cable is shielded to ensure signal integrity and reduce electromagnetic interference.

The cable is available in various lengths and configurations. Please refer to the product specifications for detailed information.

### Length imprint on the boot

## Allgemeine Daten

Cable length: 10m Cable type: Cat 6A	Part number: 12345678
Manufacturer: EFB Elektronik	Date of issue: 2024-04-29
Contact information: info@efb.de	Website: www.efb.de

This datasheet was created automatically on 29-04-2024 . Technical changes reserved.

# DATASHEET

□	□□□□ □□□ □□	□□ □□□□ □□□□ □□
---	-------------	-----------------

□□□ □ □□□□	
□ □□ □□□□□	□□
□□□	

## General data

□□□ □□□	
□□□□□ □□ □□	
□□□□□ □□ □	□□
□□□ □□□□□□	□□□□□□□ □ □□□
□□□□□□	□□□ □□□□ □
□□□□□□□	□□□□
□ □□ □□□□□□□□	□□□□□□□□ □□ □□ □
□□□□□□□□□□□□ □□ □	□ □
□□□□□□□□ □□□ □□□	□ □
□□□□□□□ □□ □	□□□ □ □□
□□□ □ □	□□
□□ □□□	

## Mechanical characteristics

□□□□□□□ □□□ □□	□ □□ □ □□□ □□ □□□□□□□□
□□□□ □□□□□	□ □
□□□□ □□□□ □	

### Cable construction

□□ □□□□	□□
□□□□□□□□ □□ □□□	□□□ □

### Kabelaufbau

□□ □ □□□□ □□□□□□□ □□□□	
□□ □ □□□□ □□□□□□□ □□□□	
□□□ □□□□□□□□□□	□

### Cable sheath

□□□ □□□□□□ □□□□□□□ □□	□□□
□□□ □ □□□□□□□	□□□

This datasheet was created automatically on 29-04-2024 . Technical changes reserved.



# DATASHEET



--	--	--	--	--	--	--	--	--


### Kabelmantel


### Environmental conditions

--	--

### Electrical characteristics


### Elektrische Eigenschaften


### Übertragungstechnische Eigenschaften


### Standards, approvals, certifications


This datasheet was created automatically on 29-04-2024 . Technical changes reserved.



TECHNICAL DATA

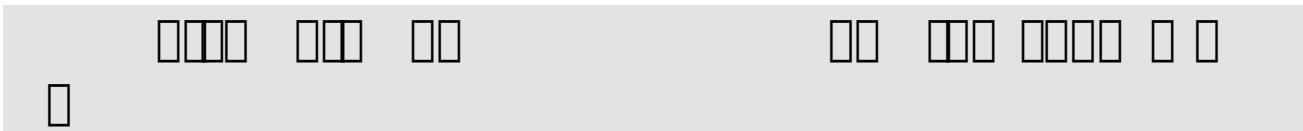
20

CONNECTION

WIR SORGEN FÜR VERBINDUNG  
WE CARE FOR CONNECTION



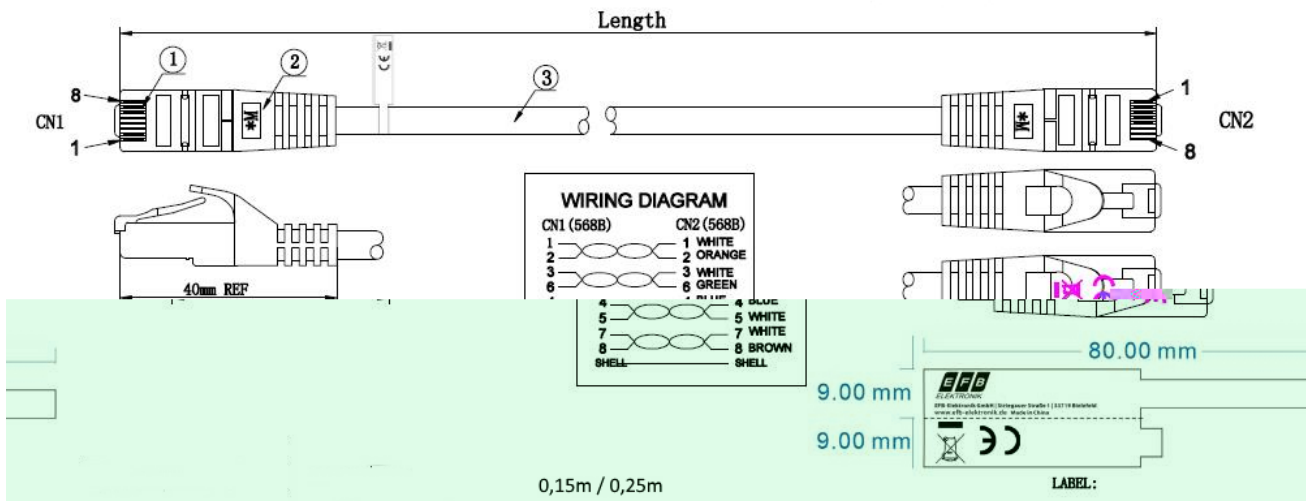
# DATASHEET



## Available variants

ArtNr.	Bezeichnung	Length	Längentoleranz
	0000 00 00	00 00 0000 0 0 0	0 ±
	0000 00 00	00 00 0000 0 0 0	0 ±
	0000 00 00	00 00 0000 0 0 0	0 ±
	0000 00 00	00 00 0000 0 0 0	0 ±
	0000 00 00	00 00 0000 0 0 0	0 ±
	0000 00 00	00 00 0000 0 0 0	0 ±
	0000 00 00	00 00 0000 0 0 0	0 ±
	0000 00 00	00 00 0000 0 0 0	0 ±
	0000 00 00	00 00 0000 0 0 0	0 ±
	0000 00 00	00 00 0000 0 0 0	0 ±
	0000 00 00	00 00 0000 0 0 0	0 ±
	0000 00 00	00 00 0000 0 0 0	0 ±
	0000 00 00	00 00 0000 0 0 0	0 ±
	0000 00 00	00 00 0000 0 0 0	0 ±
	0000 00 00	00 00 0000 0 0 0	0 ±

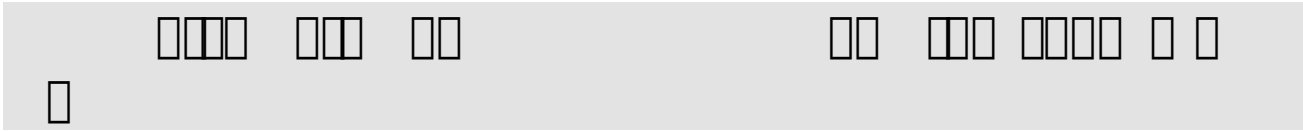
## Drawings



This datasheet was created automatically on 29-04-2024 . Technical changes reserved.



# DATASHEET



This datasheet was created automatically on 29-04-2024 . Technical changes reserved.

