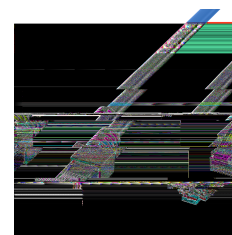
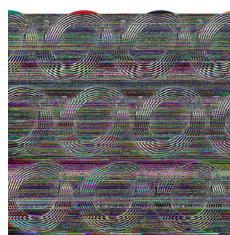
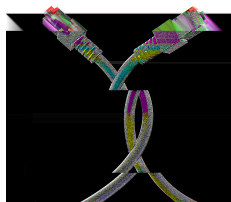
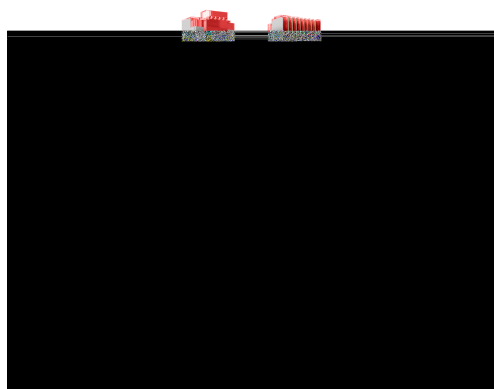


DATASHEET

RJ45 Patch Cord Cat.6 S/FTP LSZH blue 2m



General data

The shielded Cat.6 RJ45 patch cable with ensures excellent performance for 5 Gigabit Ethernet applications.

Cross section 4 x 2 x AWG27/7

Moulded grommet (**patented**)

Length imprint on the boot

Allgemeine Daten

Suitable for degree of protection (IP)	IP20
AWG-size	27/7
Fire retardant version	True
Model	Shielded
Jacket Material	LSZH

This datasheet was created automatically on 07-05-2024 . Technical changes reserved.



DATASHEET

RJ45 Patch Cord Cat.6 S/FTP LSZH blue 2m

Length imprint	True
----------------	------

General data

Colour anti-kink sleeve	blue
Cable type	S/FTP
Pin assignment	1:1
Locking lever	True
Contacts	Gold plated
Allocation	acc. TIA/EIA 568B
Connector type	RJ45 Standard
Area of Application	Industrial Ethernet
Anti-kink sleeve	plugged in
Colour outer sheath	blue
Halogen free	True
Category	6

Mechanical characteristics

Conductive shield	Selected shield contact
Mating cycles	2000
Bending radius	>31 mm

Cable construction

Conductor Material	Copper
--------------------	--------

Kabelaufbau

Type of connector connection 2	RJ45 8(8)
Type of connector connection 1	RJ45 8(8)
Cable construction	4x2

Cable sheath

Low smoke	True
Oil resistant (according to EN 60811-404)	False
Flame retardant	acc. IEC60332-1
Silicone-free	True

Kabelmantel

This datasheet was created automatically on 07-05-2024 . Technical changes reserved.



DATASHEET

RJ45 Patch Cord Cat.6 S/FTP LSZH blue 2m

Outer diameter of the cable	6.2 mm
Halogen-free	True
Printing	Cat.6 S/FTP 4x2xAWG27/7 PIMF ISO/IEC 11801 & EN50173-1 TIA/EIA 568B.2-1 Halogen Free ***Gigabit*** www.efb-elektronik.de

Environmental conditions

Temperature range	0 – 60 °C
-------------------	-----------

Electrical characteristics

Insulation Resistance	10 MΩ
NVP value	- %
Loop resistance	370 Ω/km
Contact Resistance	30 mΩ
Conductor resistance DC	185 Ω/km
POE class	PoE+ acc. to IEEE802.3at
Current Rating	max. 1 A
Resistance unbalance	5 %

Elektrische Eigenschaften

Operating-/ tempering voltage	max. 50 V DC
-------------------------------	--------------

Übertragungstechnische Eigenschaften

Bandwidth	250MHz
-----------	--------

Standards, approvals, certifications

Cabling standard	EN50173
Oil resistant (acc. EN 60811-2-1)	False
Connector	IEC 60603-7-5

Available variants

ArtNr.	Bezeichnung	Length	Längentoleranz
K5513.0,15	RJ45 Patch Cord Cat.6 S/FTP LSZH blue 0,15m	0.15 m	±5 %
K5513.0,25	RJ45 Patch Cord Cat.6 S/FTP LSZH blue 0,25m	0.25 m	±5 %
K5513.0,5	RJ45 Patch Cord Cat.6 S/FTP LSZH blue 0,5m	0.5 m	±5 %
K5513.1	RJ45 Patch Cord Cat.6 S/FTP LSZH blue 1m	1.0 m	±5 %

This datasheet was created automatically on 07-05-2024 . Technical changes reserved.

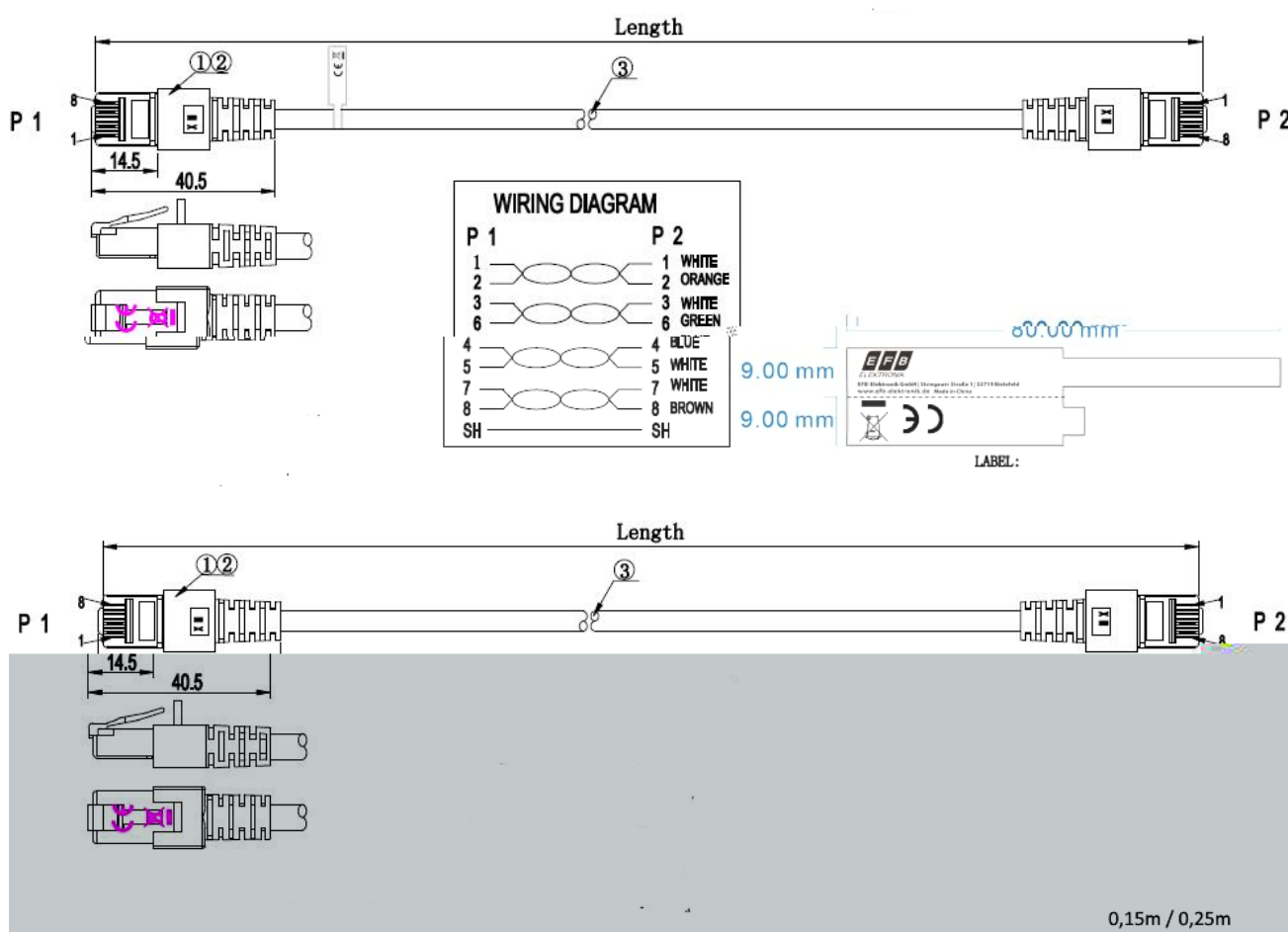


DATASHEET

RJ45 Patch Cord Cat.6 S/FTP LSZH blue 2m

K5513.1,5	RJ45 Patch Cord Cat.6 S/FTP LSZH blue 1,5m	1.5 m	±5 %
K5513.2	RJ45 Patch Cord Cat.6 S/FTP LSZH blue 2m	2.0 m	±5 %
K5513.3	RJ45 Patch Cord Cat.6 S/FTP LSZH blue 3m	3.0 m	±5 %
K5513.5	RJ45 Patch Cord Cat.6 S/FTP LSZH blue 5m	5.0 m	±5 %
K5513.7,5	RJ45 Patch Cord Cat.6 S/FTP LSZH blue 7,5m	7.5 m	±5 %
K5513.10	RJ45 Patch Cord Cat.6 S/FTP LSZH blue 10m	10.0 m	±5 %
K5513.15	RJ45 Patch Cord Cat.6 S/FTP LSZH blue 15m	15.0 m	±5 %
K5513.20	RJ45 Patch Cord Cat.6 S/FTP LSZH blue 20m	20.0 m	±5 %
K5513.25	RJ45 Patch Cord Cat.6 S/FTP LSZH blue 25m	25.0 m	±5 %
K5513.30	RJ45 Patch Cord Cat.6 S/FTP LSZH blue 30m	30.0 m	±5 %
K5513.40	RJ45 Patch Cord Cat.6 S/FTP LSZH blue 40m	40.0 m	±5 %
K5513.50	RJ45 Patch Cord Cat.6 S/FTP LSZH blue 50m	50.0 m	±5 %

Drawings



This datasheet was created automatically on 07-05-2024 . Technical changes reserved.

