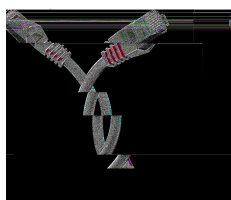
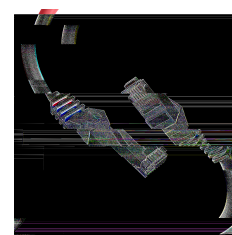
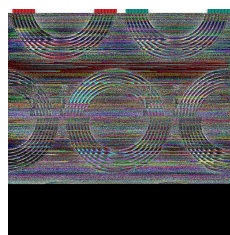
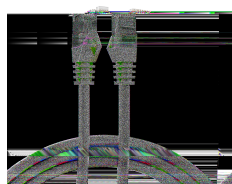
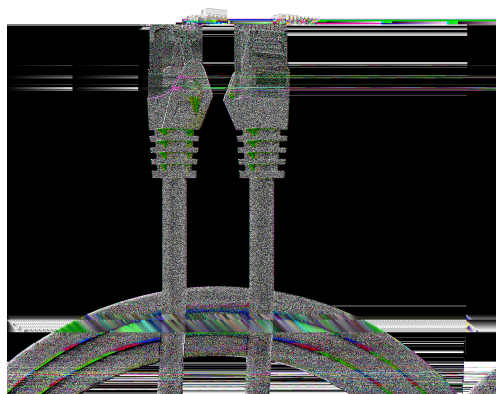


# DATASHEET

## RJ45 Patch Cord Cat.6 U/UTP LSZH CCA red 2m



### General data

The unshielded Cat.6 RJ45 patch cable with ensures excellent performance for 5 Gigabit Ethernet applications. The moulded grommet captivates with its **slim design** and thus simpli es the insertion process in cramped conditions.

Cross section 4 x 2 x **AWG24/7**

Moulded grommet, slim design

**Length imprint on the boot**

### Allgemeine Daten

Model	Unshielded
Suitable for degree of protection (IP)	IP20
Fire retardant version	True
Jacket Material	LSZH

This datasheet was created automatically on 08-05-2024 . Technical changes reserved.



# DATASHEET

## RJ45 Patch Cord Cat.6 U/UTP LSZH CCA red 2m

AWG-size	24/7
----------	------

### General data

Pin assignment	1:1
Locking lever	True
Contacts	Gold plated $\mu$ " gold plated
Allocation	acc. TIA/EIA 568B
Connector type	RJ45 Standard
Cable type	U/UTP
Area of Application	Industrial Ethernet
Colour anti-kink sleeve	red
Colour outer sheath	red
Anti-kink sleeve	plugged in
Halogen free	True
Category	6

### Mechanical characteristics

Bending radius	30 mm
Mating cycles	750

### Cable construction

Conductor Material	CCA
--------------------	-----

### Kabelaufbau

Type of connector connection 2	RJ45 8(8)
Type of connector connection 1	RJ45 8(8)
Cable construction	4x2

### Cable sheath

Low smoke	True
Oil resistant (according to EN 60811-404)	False
Silicone-free	True
Flame retardant	True

### Kabelmantel

This datasheet was created automatically on 08-05-2024 . Technical changes reserved.



# DATASHEET

## RJ45 Patch Cord Cat.6 U/UTP LSZH CCA red 2m

Printing	Cat.6 U/UTP AWG24/7 stranded x 4pairs LSZH cable www.efb-elektronik.de
Outer diameter of the cable	5.9 mm
Halogen-free	True

### Electrical characteristics

NVP value	- %
POE class	PoE+ acc. to IEEE802.3at
Current Rating	max. 1 A

### Elektrische Eigenschaften

Operating-/ tempering voltage	max. 50 V DC
-------------------------------	--------------

### Übertragungstechnische Eigenschaften

Bandwidth	250MHz
Transmission	5Gbit

### Standards, approvals, certifications

Cabling standard	EN50173
Connector	IEC 60603-7-4
Oil resistant (acc. EN 60811-2-1)	False

### Available variants

ArtNr.	Bezeichnung	Length	Längentoleranz
K8104RT.0,25	RJ45 Patch Cord Cat.6 U/UTP LSZH CCA red 0,25m	0.25 m	± 5 %
K8104RT.0,5	RJ45 Patch Cord Cat.6 U/UTP LSZH CCA red 0,5m	0.5 m	± 5 %
K8104RT.1	RJ45 Patch Cord Cat.6 U/UTP LSZH CCA red 1m	1.0 m	± 5 %
K8104RT.1,5	RJ45 Patch Cord Cat.6 U/UTP LSZH CCA red 1,5m	1.5 m	± 5 %
K8104RT.2	RJ45 Patch Cord Cat.6 U/UTP LSZH CCA red 2m	2.0 m	± 5 %
K8104RT.3	RJ45 Patch Cord Cat.6 U/UTP LSZH CCA red 3m	3.0 m	± 5 %
K8104RT.5	RJ45 Patch Cord Cat.6 U/UTP LSZH CCA red 5m	5.0 m	± 5 %
K8104RT.7,5	RJ45 Patch Cord Cat.6 U/UTP LSZH CCA red 7,5m	7.5 m	± 5 %
K8104RT.10	RJ45 Patch Cord Cat.6 U/UTP LSZH CCA red 10m	10.0 m	± 5 %
K8104RT.15	RJ45 Patch Cord Cat.6 U/UTP LSZH CCA red 15m	15.0 m	± 5 %
K8104RT.20	RJ45 Patch Cord Cat.6 U/UTP LSZH CCA red 20m	20.0 m	± 5 %

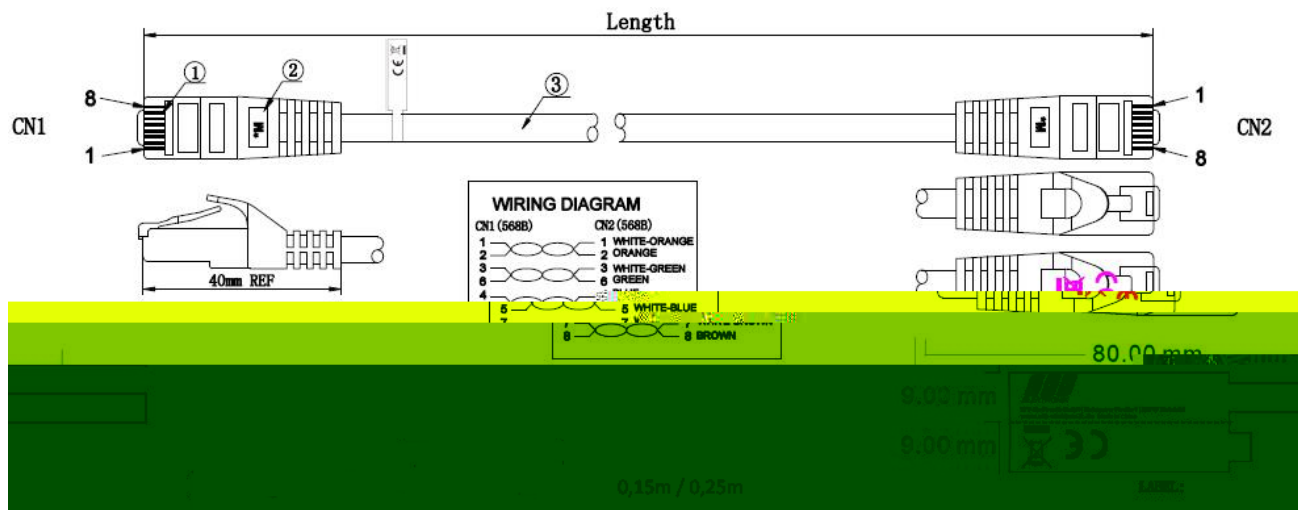
### Drawings

This datasheet was created automatically on 08-05-2024 . Technical changes reserved.



# DATASHEET

## RJ45 Patch Cord Cat.6 U/UTP LSZH CCA red 2m



This datasheet was created automatically on 08-05-2024 . Technical changes reserved.

